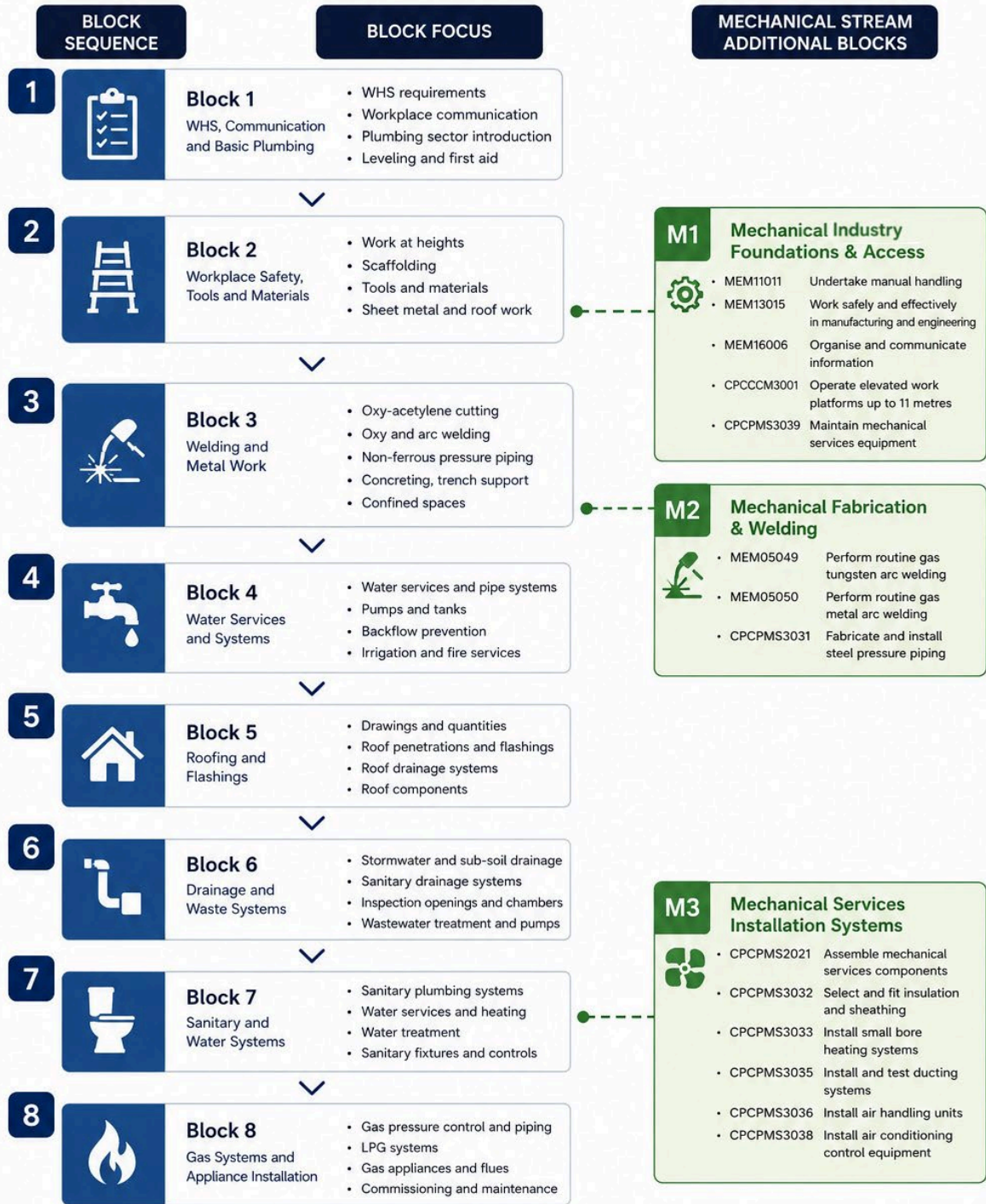


# CPC32420 Certificate III in Plumbing

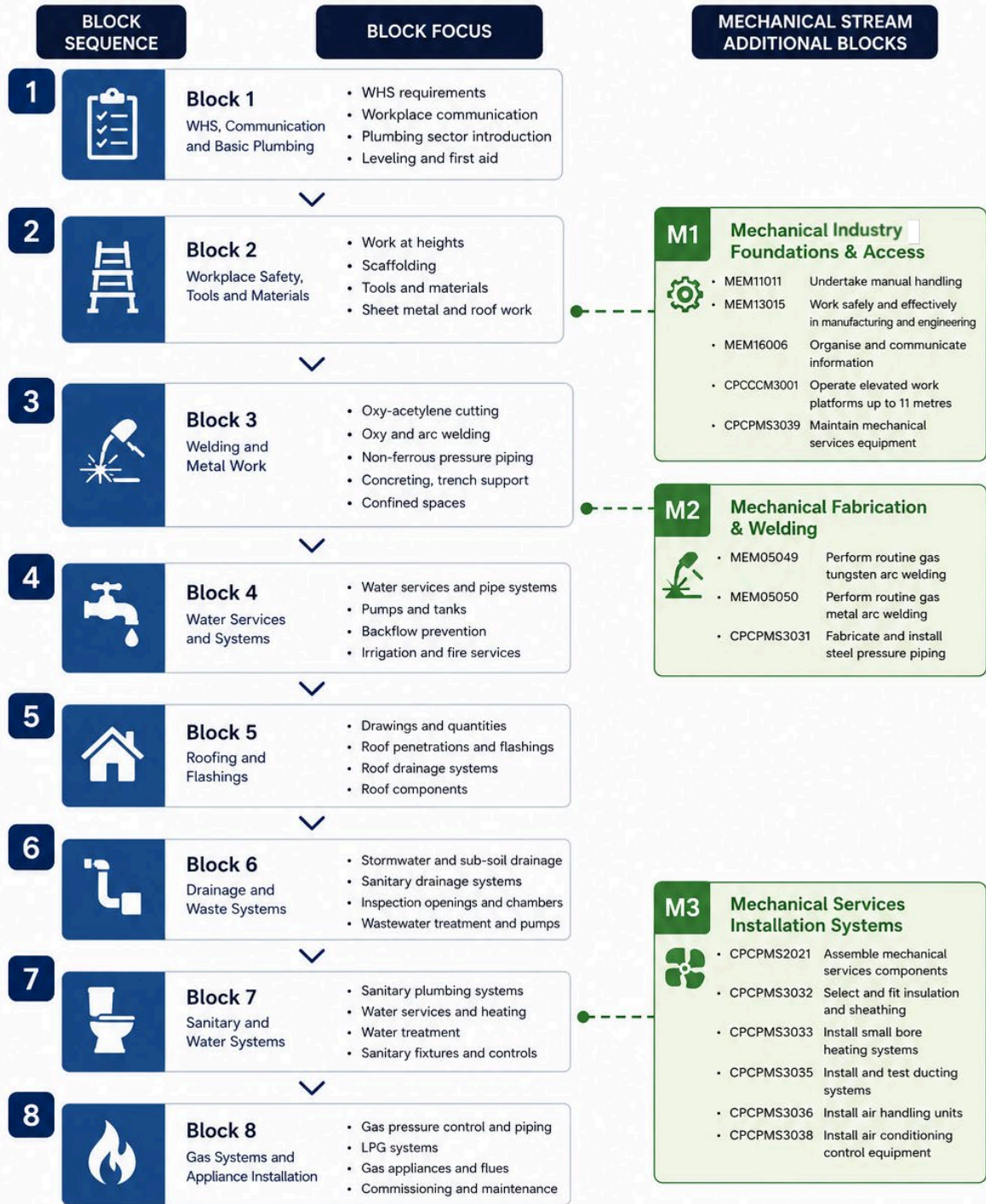
## Proposed Block Journey – Plumbing + Mechanical Plumbing Stream



JOURNEY SUMMARY	LEGEND	KEY OUTCOMES
<p><b>11 Blocks Total</b> (8 Core Plumbing + 3 Mechanical Stream Blocks)</p> <p>Mechanical stream blocks are integrated at key points to build capability, meet prerequisites and support trade progression.</p>	<ul style="list-style-type: none"> <li>Core Plumbing Blocks (Existing)</li> <li>Mechanical Plumbing Stream Additional Blocks</li> <li>Placement of Mechanical Stream Blocks</li> </ul>	<ul style="list-style-type: none"> <li>Strengthens fabrication and welding capability</li> <li>Builds mechanical services installation expertise</li> <li>Supports industry demand for mechanical plumbing skills</li> <li>Enhances career pathways and trade recognition opportunities</li> </ul>

# CPC32420 Certificate III in Plumbing

## Proposed Block Journey – Plumbing + Mechanical Plumbing Stream



JOURNEY SUMMARY	LEGEND	KEY OUTCOMES
<p><b>11 Blocks Total</b> (8 Core Plumbing + 3 Mechanical Stream Blocks)</p> <p>Mechanical stream blocks are integrated at key points to build capability, meet prerequisites and support trade progression.</p>	<ul style="list-style-type: none"> <li>Core Plumbing Blocks (Existing)</li> <li>Mechanical Plumbing Stream Additional Blocks</li> <li>Placement of Mechanical Stream Blocks</li> </ul>	<ul style="list-style-type: none"> <li>Strengthens fabrication and welding capability</li> <li>Builds mechanical services installation expertise</li> <li>Supports industry demand for mechanical plumbing skills</li> <li>Enhances career pathways and trade recognition opportunities</li> </ul>

## CPC32420 Certificate III in Plumbing

### Mechanical

For the award of the CPC32420 Certificate III in Plumbing (General Plumbing and Mechanical) a minimum of 73 units are to be completed as follows:

- 43 core units
- 30 electives

Electives are to be selected as followed:

- 8 units from Group A and
- 4 units from Group B and
- 3 units from Group C and
- 7 units from Group E and
- 8 units from Group F

Up to 4 elective units may be replaced by units from any other group or from any relevant nationally endorsed Training Package or accredited course. The units must contribute to the vocational outcomes of the qualification.

This specialisation contains 15 additional units over the current General Plumbing Pathway.

## CPC32420 Certificate III in Plumbing

Block 1		
CPCCWHS2001	Apply WHS requirements, policies and procedures in the construction industry (*3)	Group F
CPCPCM2039	Carry out interactive workplace communication	Core
CPCPCM2041	Work effectively in the plumbing services sector	Core
CPCPCM2043	Carry out WHS requirements	Core
HLTAID011	Provide first aid	Core
CPCPCM2047	Carry out levelling	Core

Block 2		
CPCCCM2012	Work safely at heights	Core
CPCPCM2045	Handle and store plumbing materials	Core
CPCCCM2008	Erect and dismantle restricted height scaffolding	Group A
CPCPCM2046	Use plumbing hand and power tools	Core
CPCPCM2048	Cut and join sheet metal	Core
CPCPCM2055	Work safely on roofs	Core

Block 3		
CPCPCM2049	Cut using oxy-acetylene equipment	Group A
CPCPCM2052	Weld mild steel using oxy-acetylene equipment	Group A
CPCPCM3023	Fabricate and install non-ferrous pressure piping	Core
CPCPCM2054	Carry out simple concreting and rendering	Core
CPCPCM3025	Install trench support	Core
RIIWHS202E	Enter and work in confined spaces	Group C

## CPC32420 Certificate III in Plumbing

Block 4		
CPCPWT3028	Install property service	Group A
CPCPWT3029	Install water pipe systems	Group A
CPCPCM3022	Weld polymer pipes using fusion method	Core
CPCPWT3025	Install water pumpsets	Core
CPCPRF2023	Collect and store roof water	Core
CPCPWT3020	Connect and install storage tanks to a domestic water supply	Core
CPCPWT3027	Install backflow prevention devices	Core
CPCPIG3021	Set out, install and commission irrigation systems	Group A
CPCPFS3031	Fabricate and install fire hydrant and hose reel systems	Core

Block 5		
CPCPCM3024	Prepare simple drawings	Core
CPCPCM2040	Read plans, calculate quantities and mark out materials	Core
CPCPCM3021	Flash penetrations through roofs and walls	Core
CPCPRF3023	Fabricate and install external flashings	Core
CPCPRF3022	Fabricate and install roof drainage systems	Core
CPCPRF3024	Install roof components	Core

Block 6		
CPCPDR2025	Install stormwater and sub-soil drainage systems and drain work site	Core
CPCPDR3021	Plan layout and install below ground sanitary drainage system	Core
CPCPDR2026	Install prefabricated inspection openings and inspection chambers	Core
CPCPDR3023	Install on-site domestic wastewater treatment plants and disposal systems	Core
CPCPSN3025	Install pre-treatment facilities	Group C

Information Classification: Public

Version: 2.0

Document Owner: Head of Education & Training WA

Authorisation: DRAFT 28/05/2026

Next Review Date: 9/06/2026

## CPC32420 Certificate III in Plumbing

CPCPSN3026	Install sewerage pumpsets	Group C
CPCPDR2021	Locate and clear blockages	Core

### Block 7

CPCPSN3011	Plan the layout of a residential sanitary plumbing system and fabricate and install sanitary stacks	Core
CPCPSN3022	Install discharge pipes	Core
CPCPWT3021	Set out and install water services	Core
CPCPWT3022	Install and commission water heating systems and adjust controls and devices	Core
CPCPWT3024	Install and maintain domestic water treatment equipment	Group A
CPCPWT3026	Install and fit off sanitary fixtures, water services and adjust water service controls	Core

### Block 8

CPCPGS3048	Install gas pressure control equipment	Core
CPCPGS3055	Install gas sub-meters	Group B
CPCPGS3059	Install LPG storage of aggregate storage capacity up to 500 litres	Core
CPCPGS3056	Size and install consumer gas piping systems	Core
CPCPGS3051	Purge consumer piping	Core
CPCPGS3061	Install and commission Type A gas appliances	Core
CPCPGS3052	Maintain Type A gas appliances	Group B
CPCPGS3053	Disconnect and reconnect Type A gas appliances	Core
CPCPGS3054	Calculate and install natural ventilation for Type A gas appliances	Core
CPCPGS3049	Install gas appliance flues	Core
CPCPGS3046	Install LPG systems in caravans, mobile homes and mobile workplaces	Group B
CPCPGS3047	Install LPG systems in marine craft	Group B

## CPC32420 Certificate III in Plumbing

Block M1		
MEM11011*	Undertake manual handling	Group A
MEM13015	Work safely and effectively in manufacturing and engineering	Group A
MEM16006*	Organise and communicate information	Group A
CPCCCM3001	Operate elevated work platforms up to 11 metres	Group F
CPCPMS3039*	Maintain mechanical services equipment	Group E

Block M2		
MEM05049*	Perform routine gas tungsten arc welding	Group A
MEM05050*	Perform routine gas metal arc welding	Group A
CPCPMS3031*	Fabricate and install steel pressure piping	Group E

Block M3		
CPCPMS2021*	Assemble mechanical services components	Group E
CPCPMS3032*	Select and fit insulation and sheathing	Group E
CPCPMS3033*	Install small bore heating systems	Group F
CPCPMS3035*	Install and test ducting systems	Group E
CPCPMS3036*	Install air handling units	Group E
CPCPMS3038*	Install air conditioning control equipment	Group E
CPCPMS3035*	Install and test ducting systems	Group E

## CPC32420 Certificate III in Plumbing

Mechanical Plumbing Stream			
Code	Name	Group	Block
<b>Group A</b>			
CPCPWT3024	Install and maintain domestic water treatment equipment	Group A	7
CPCPWT3028	Install property service	Group A	4
MEM05049*	Perform routine gas tungsten arc welding	Group A	M2
MEM05050*	Perform routine gas metal arc welding	Group A	M2
CPCPCM2052*	Weld mild steel using oxy-acetylene equipment	Group A	3
MEM11011*	Undertake manual handling	Group A	M1
MEM13015	Work safely and effectively in manufacturing and engineering	Group A	M1
MEM16006*	Organise and communicate information	Group A	M1
<b>Group B</b>			
CPCPGS3052	Maintain Type A gas appliances	Group B	8
CPCPGS3055*	Install gas sub-meters	Group B	8
CPCPGS3047*	Install LPG systems in marine craft	Group B	8
CPCPGS3046*	Install LPG systems in caravans, mobile homes and mobile workplaces	Group B	8
<b>Group C</b>			
CPCPSN3025*	Install pre-treatment facilities	Group C	6
CPCPSN3026*	Install sewerage pumpsets	Group C	6
RIIWHS202E	Enter and work in confined spaces	Group A/C	3
<b>Group E</b>			
CPCPMS2021*	Assemble mechanical services components	Group E	M3
CPCPMS3031*	Fabricate and install steel pressure piping	Group E	M2
CPCPMS3039*	Maintain mechanical services equipment	Group E	M1
CPCPMS3032*	Select and fit insulation and sheathing	Group E	M3
CPCPMS3036*	Install air handling units	Group E	M3

Information Classification: Public

Version: 2.0

Document Owner: Head of Education & Training WA

Authorisation: DRAFT 28/05/2026

Next Review Date: 9/06/2026

## CPC32420 Certificate III in Plumbing

CPCPMS3038*	Install air conditioning control equipment	Group E	M3
CPCPMS3035*	Install and test ducting systems	Group E	M3
<b>Group F</b>			
CPCCWHS2001	Apply WHS requirements, policies and procedures in the construction industry (*3)	Group F	1
CPCCCM3001	Operate elevated work platforms up to 11 metres	Group A/C/F	M1
CPCPCM2049*	Cut using oxy-acetylene equipment	Group A/F	3
CPCPMS3033*	Install small bore heating systems	Group F	M3
CPCCCM2008*	Erect and dismantle restricted height scaffolding	Group A/F	2
CPCPCM2053*	Weld using metal arc welding equipment	Group B/F	3
<b>Import Group A</b>			
CPCPWT3029	Install water pipe systems	Group A - Import	4
CPCPIG3021	Set out, install and commission irrigation systems	Group A - Import	4